



SIX
CHARLES ST

MAYFAIR



YOUR OWN *personal Mayfair*

Welcome to Six Charles Street, a boutique collection of beautifully crafted homes at one of London's most prestigious postcodes. Situated just off the corner of Berkeley Square, these grand residences include lateral apartments, a mews townhouse and a stunning duplex penthouse. With interiors styled by the renowned 1508 studio, each home blends heritage features with contemporary elegance – the perfect setting for your own Mayfair story.

Known around the world for its classic Georgian squares, Michelin-starred restaurants and designer shops, Mayfair is also a neighbourhood loved by the locals who live here. Bordered by Marylebone, Soho and two Royal Parks, this coveted location is home to famous museums and galleries as well as hidden culinary and cultural gems.



Building external



Hyde Park

Grosvenor House Hotel

The Chancery Rosewood

Marble Arch

Oxford Street

Selfridge's

Grosvenor Square

Bond Street

Claridge's

The Connaught Hotel

Mount Street

Scott's

The Dorchester

Park Lane

SIX
CHARLES ST
MAYFAIR

Annabel's

Berkeley Square

Lansdowne House

Shepherd Market

Curzon Mayfair

5 Hertford Street



A NEIGHBOURHOOD *steeped in history*

Mayfair earned its name in 1686 when King James II granted Royal permission for an annual fair at what is now Shepherd Market. The Duke of Westminster's family acquired the land nearly 100 years later, and the resulting development created the streets and squares we see today. Mayfair has long been home to London's most notable buildings, institutions and residents, including former Prime Minister Archibald Primrose, born in Charles Street in 1847.

The original Six Charles Street was described in 1840 as a 'house, vault and stables'. When the lease expired it was rebuilt in 1849 in an Italianate style developed from the stucco-fronted classicism introduced by John Nash in the 1820s.

“A FIRST-CLASS
DOUBLE-FRONTED
MANSION OF NOBLE
AND COMMANDING
ELEVATION,
ARRANGED INTO
SUITES OF HANDSOME
AND SPACIOUS
CHAMBERS.”

Advertisement for
Six Charles Street
The Times, London (1853)

THE NEIGHBOURHOOD



BERKELEY SQUARE.





A NEW ERA *for Mayfair*

This quarter of Mayfair is undergoing a reinvention, with Berkeley Square leading the way. Blackstone investment bank's European headquarters will occupy the redeveloped Lansdowne House along with exciting retail space at ground level. Chanel is also making the move to Berkeley Square, transferring its global headquarters to No. 38. In parallel, contemporary venues such as Sexy Fish and the forthcoming extension to Annabel's bring a more modern glamour to complement timeless favourites like Scott's and The Wolseley.



1. Goyard
2. Dunhill
3. Huntsman Savile Row
4. Sexy Fish
5. Novikov
6. The Connaught Hotel
7. The Wolseley
8. Annabel's



MAYFAIR MOMENTS

on your doorstep

One of the capital's most sought-after addresses, Mayfair offers the very best of London. The finest museums and galleries; vibrant restaurants and nightlife; and iconic fashion and architecture. Discover local secrets, explore open green spaces and experience the world's most famous shops and hotels.

HOTELS

1. Claridge's
2. Four Seasons
3. Grosvenor House Hotel
4. The Chancery Rosewood
5. The Connaught
6. The Dorchester
7. The Ritz

F&B

8. Amazonico
9. Bocconcino
10. Corrigan's
11. Gymkhana
12. Hakkasan
13. HIDE
14. Isabel
15. Kai
16. Pollen Street Social
17. ROKA
18. Scott's
19. Sexy Fish
20. Shepherd Market
21. The Audley

PARKS

22. Green Park
23. Grosvenor Square
24. Hyde Park

LIFESTYLE

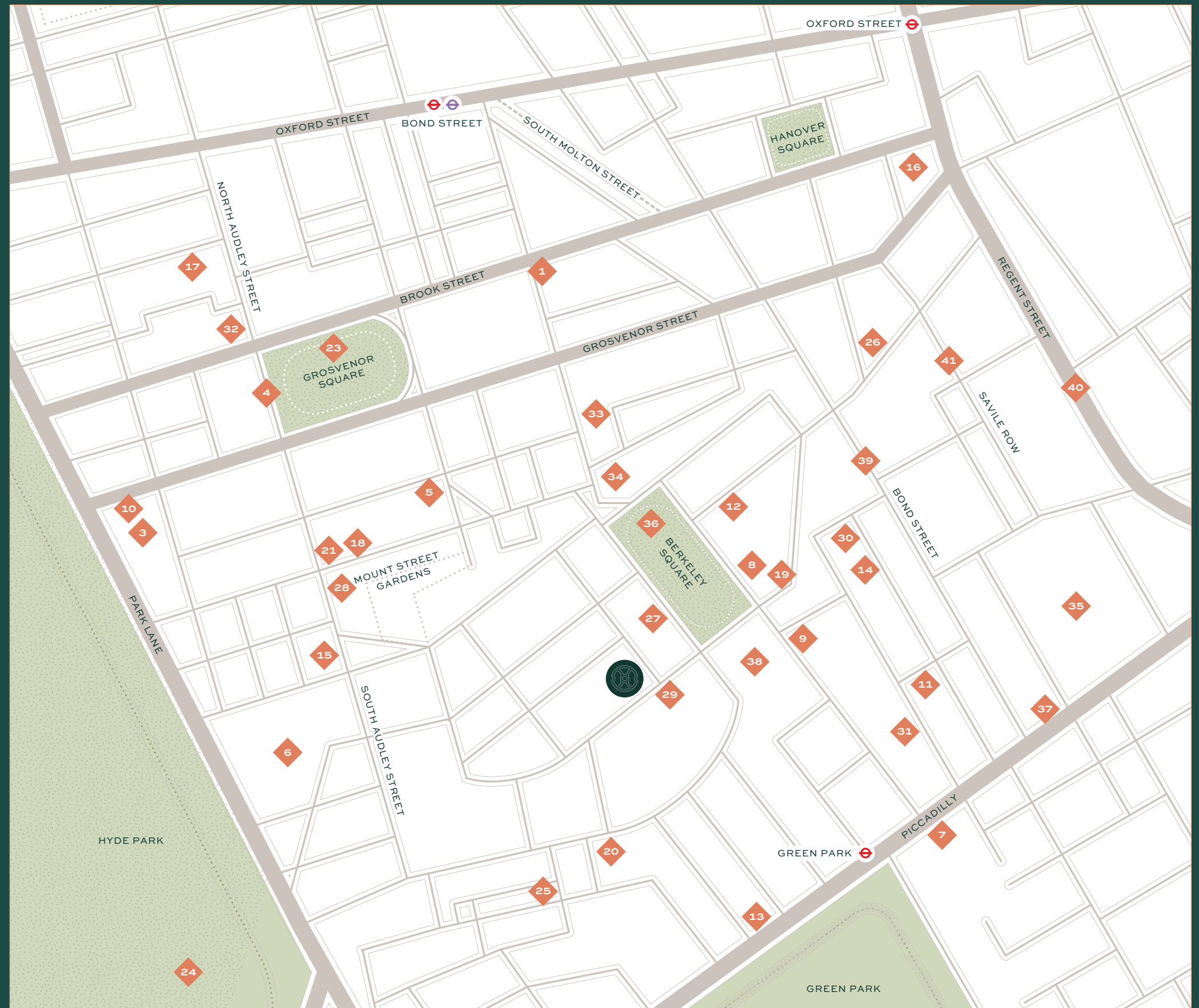
25. 5 Hertford Street
26. AllBright
27. Annabel's
28. George
29. Mark's Club
30. Oswald's
31. The Arts Club
32. The Twenty Two

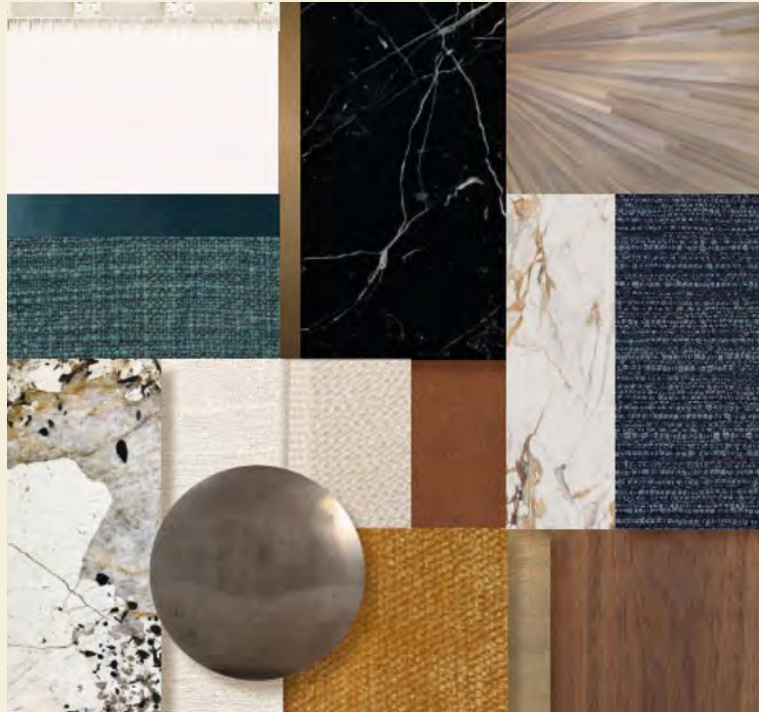
GALLERIES

33. Gagosian
34. Phillips
35. Royal Academy of Arts

SHOPPING/STREETS

36. Berkeley Square
37. Burlington Arcade
38. Lansdowne House
39. New Bond Street
40. Regent Street
41. Savile Row





1508 LONDON *interiors*

1508 is an international interior design and architecture firm, renowned for creating exceptional spaces around the world. Drawing on the local heritage and surroundings for inspiration, each home will be handcrafted to the finest finish, embracing a classic blend of the traditional and the new. Georgian period cornices and herringbone timber flooring will contrast with statement stone portals and linear joinery, while rich textures and pops of regal colours will offset walls painted in a fresh, light palette.



1508
LONDON

Computer generated image is indicative only



RESIDENCES

as unique as you

A grand entrance welcomes you into an elegant hallway, where a dedicated concierge service awaits.





A SENSE
of arrival

The light-filled lobby is defined by striking architectural features including double-height ceilings, elegant panelling and marble flooring surfaces.



THE LATERAL APARTMENTS

Discover a collection of elegant and spacious one, two and three bedroom residences. In a select few apartments, ceiling heights soar to more than four metres, creating an unparalleled sense of space and grandeur.







THE PENTHOUSE

A rare find in Mayfair, this stunning duplex penthouse offers a vast living space flooded with natural light, a spiral feature staircase and its own private roof terrace.









RESIDENCES



THE TOWNHOUSE

Accessed via the main entrance of Six Charles Street or through its own private front door on Hay's Mews, the 3-bedroom townhouse also offers a private secure parking space.



Townhouse façade



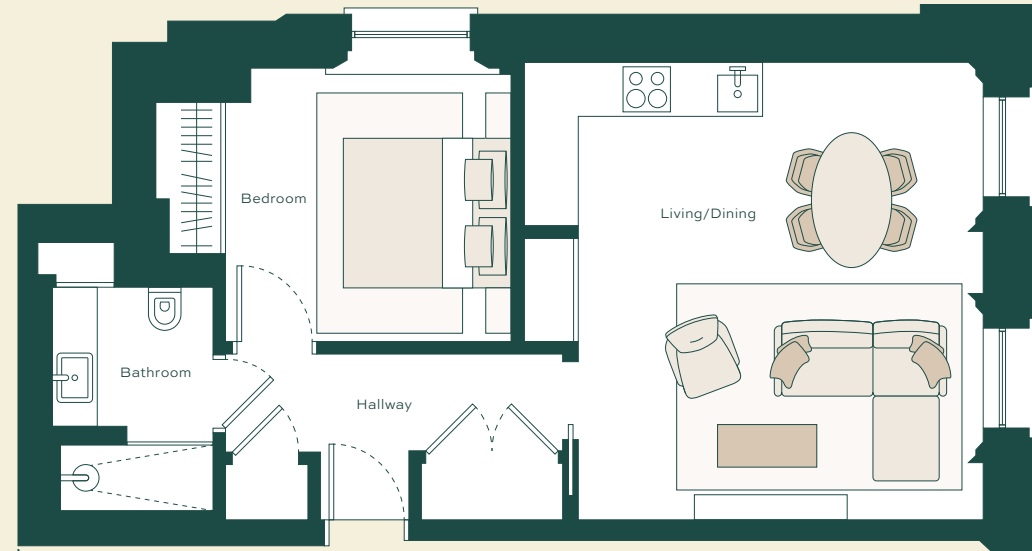


FLOOR PLANS



APARTMENT 2
1 BEDROOM
GROUND FLOOR

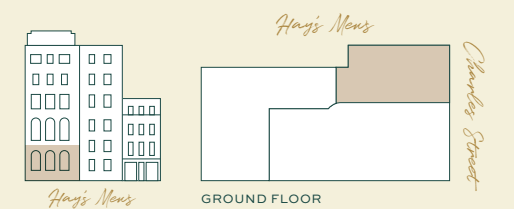
Hay's Mews



APPROXIMATE GROSS INTERNAL FLOOR AREA 621 SQ FT/57.7 SQ M



Charles Street

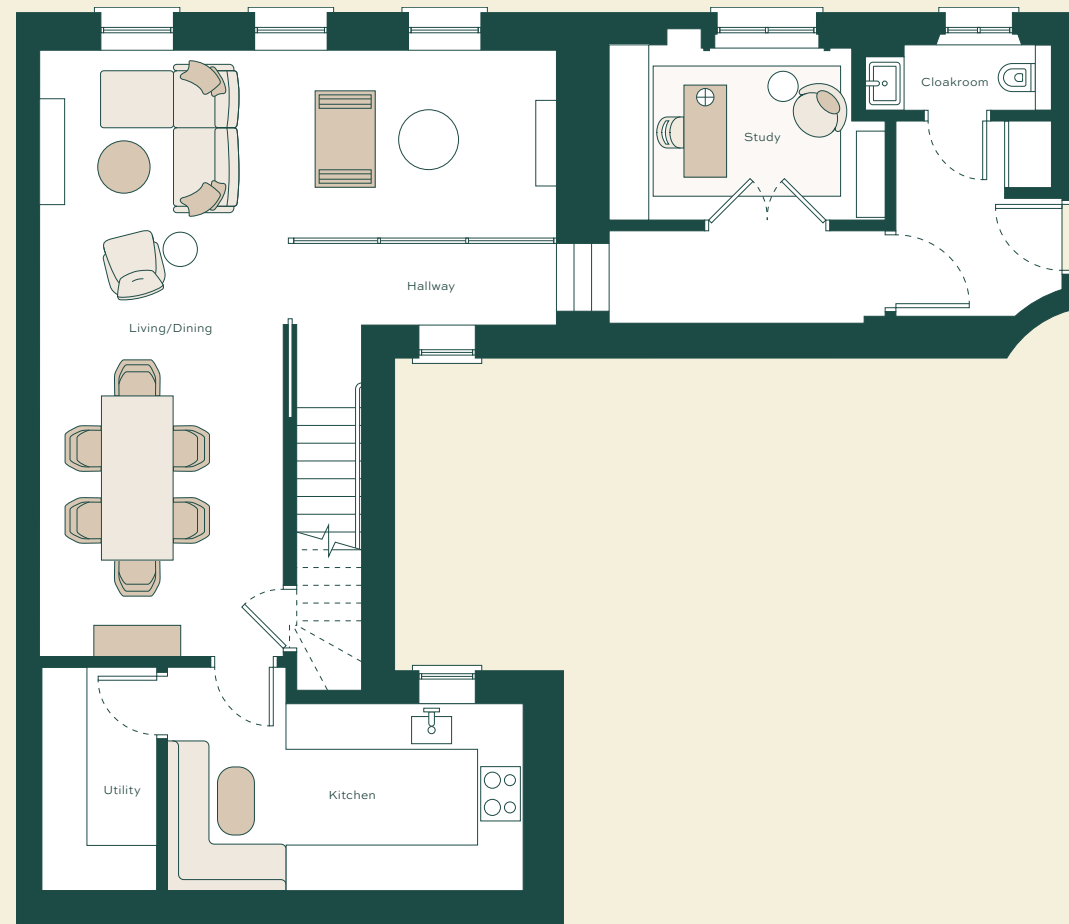




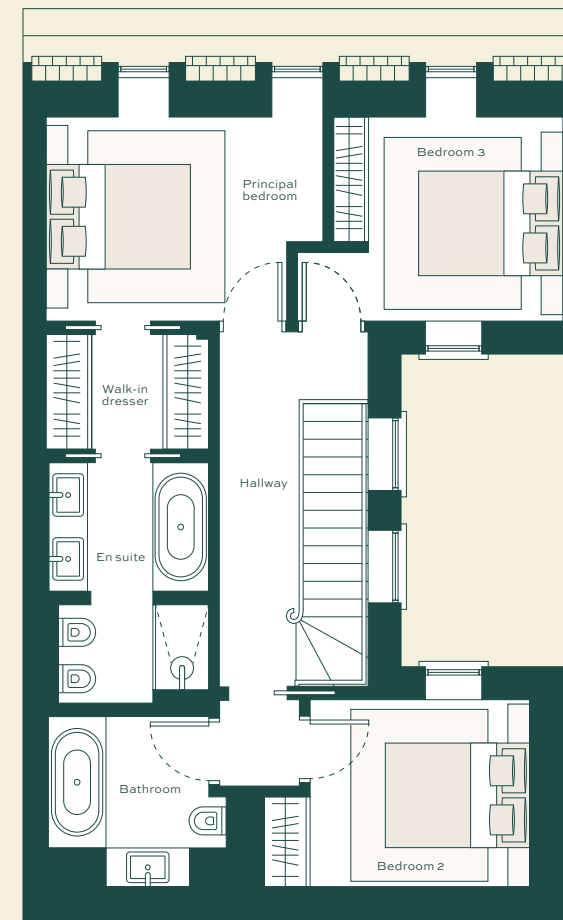
APARTMENT 3
3 BEDROOMS
SECOND & THIRD FLOOR



Hay's Mews



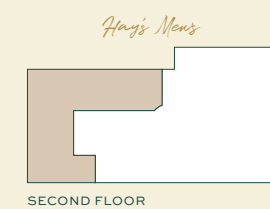
SECOND FLOOR



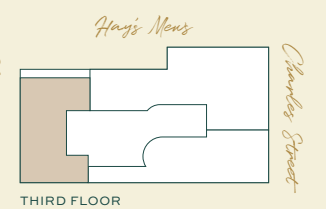
THIRD FLOOR

APPROXIMATE GROSS INTERNAL FLOOR AREA 1,729 SQ FT/160.6 SQ M

Charles Street



SECOND FLOOR



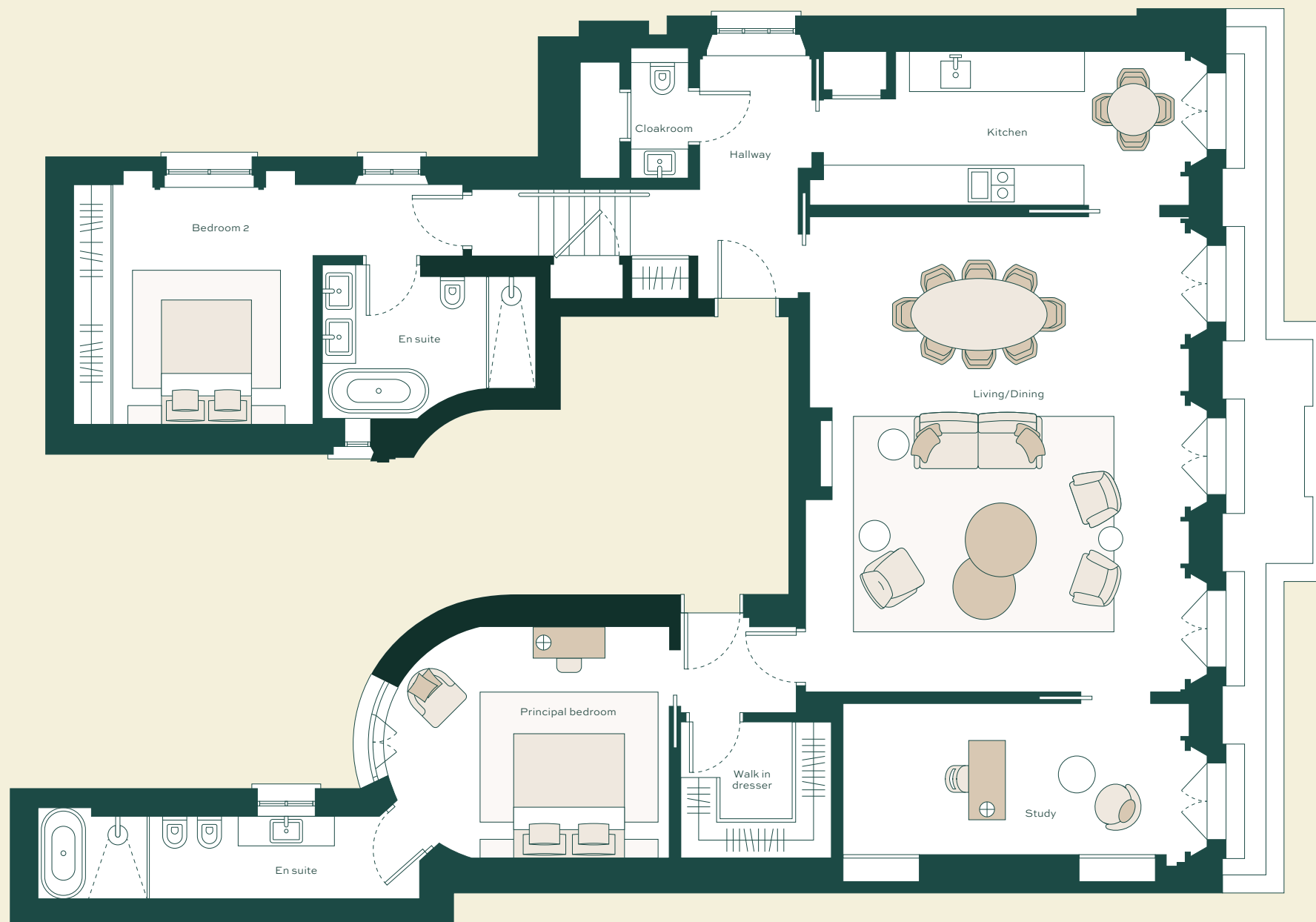
THIRD FLOOR



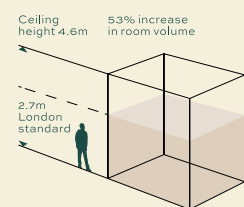
APARTMENT 4
2 BEDROOMS
FIRST FLOOR



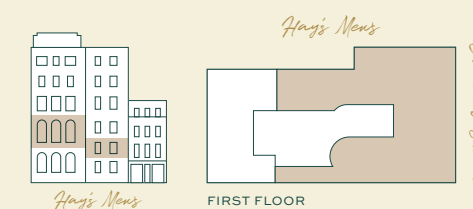
Hay's Mews



Charles Street



APPROXIMATE GROSS INTERNAL FLOOR AREA 1,764 SQ FT/163.9 SQ M

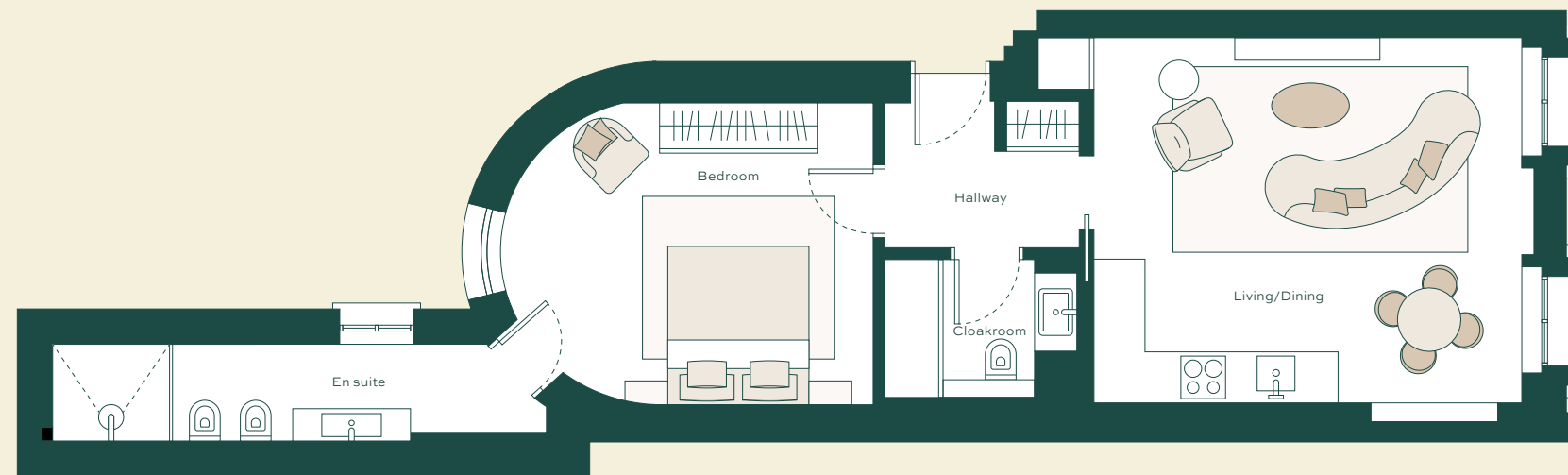




APARTMENT 5
1 BEDROOM
SECOND FLOOR

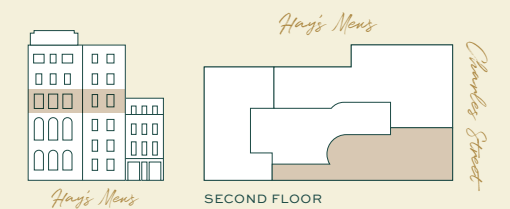


Hay's Mews



Charles Street

APPROXIMATE GROSS INTERNAL FLOOR AREA 684 SQ FT/64 SQ M

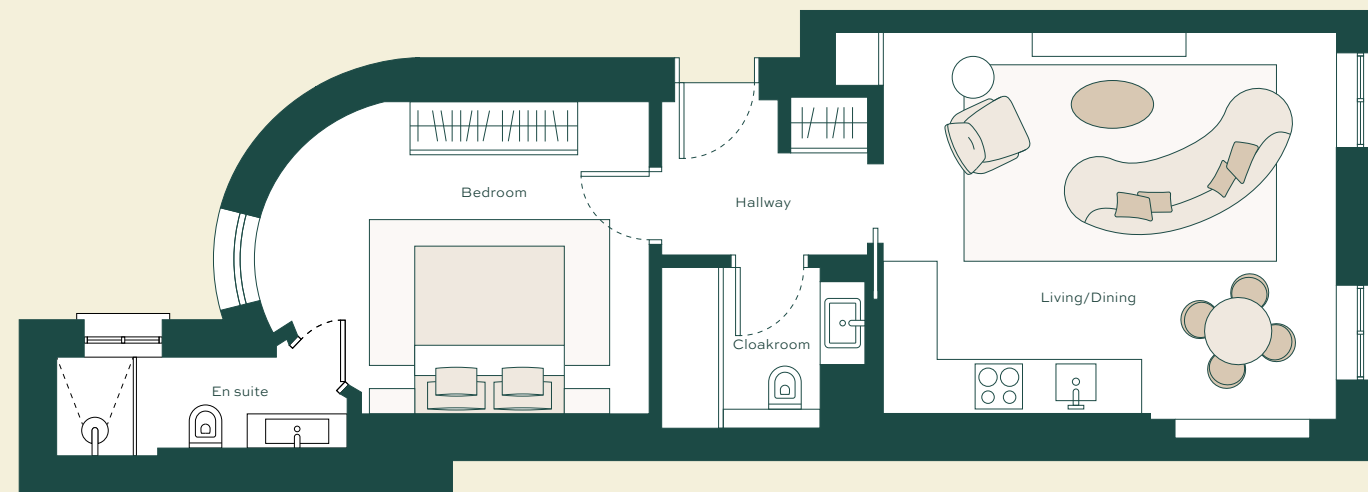




APARTMENT 7
1 BEDROOM
THIRD FLOOR

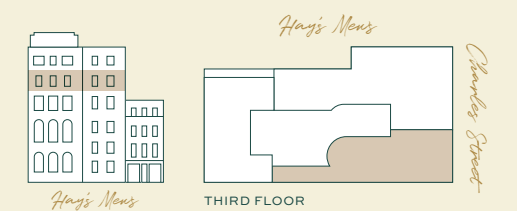


Hay's Mews



Charles Street

APPROXIMATE GROSS INTERNAL FLOOR AREA 637 SQ FT/59.2 SQ M

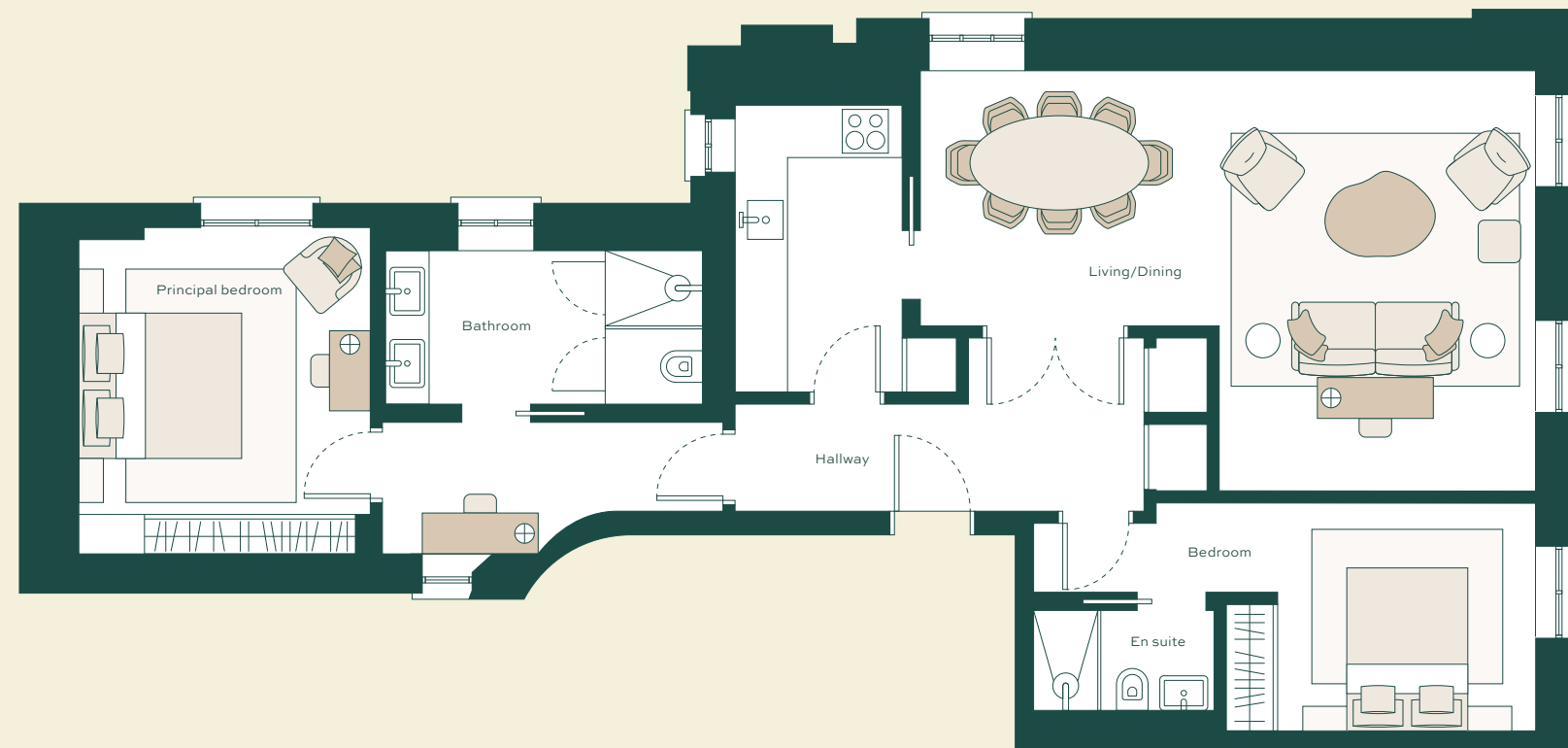




APARTMENT 8
2 BEDROOM
THIRD FLOOR

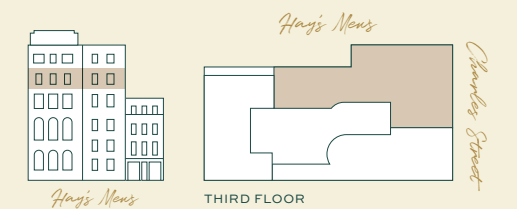


Hay's Mews



Charles Street

APPROXIMATE GROSS INTERNAL FLOOR AREA 1,113 SQ FT/103 SQ M

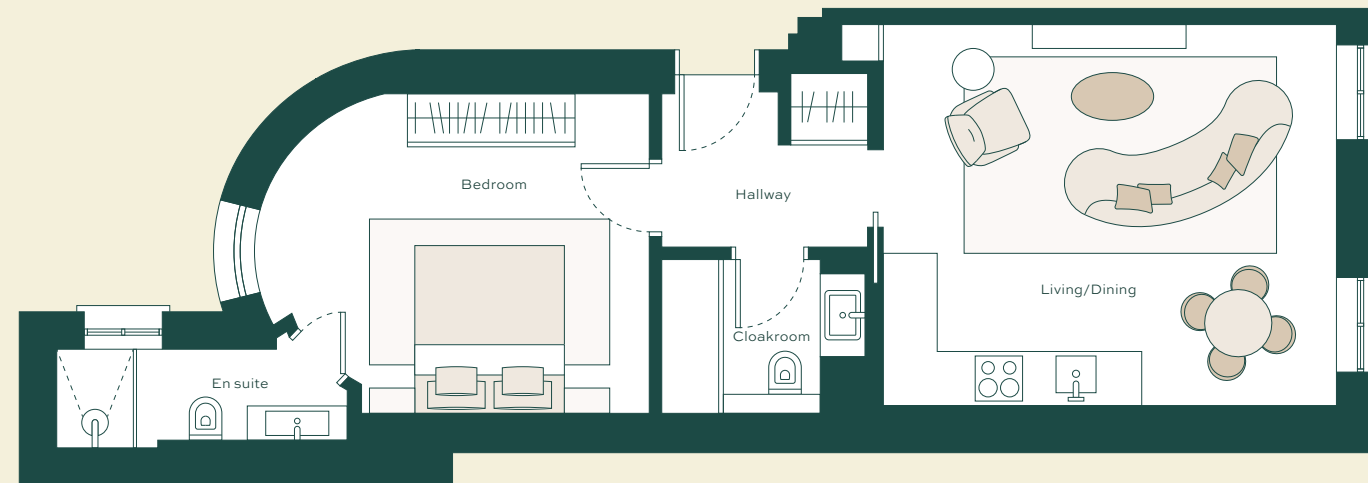




APARTMENT 9
1 BEDROOM
FOURTH FLOOR

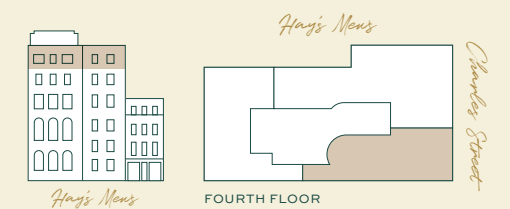


Hay's Mews



Charles Street

APPROXIMATE GROSS INTERNAL FLOOR AREA 632 SQ FT/58.7 SQ M

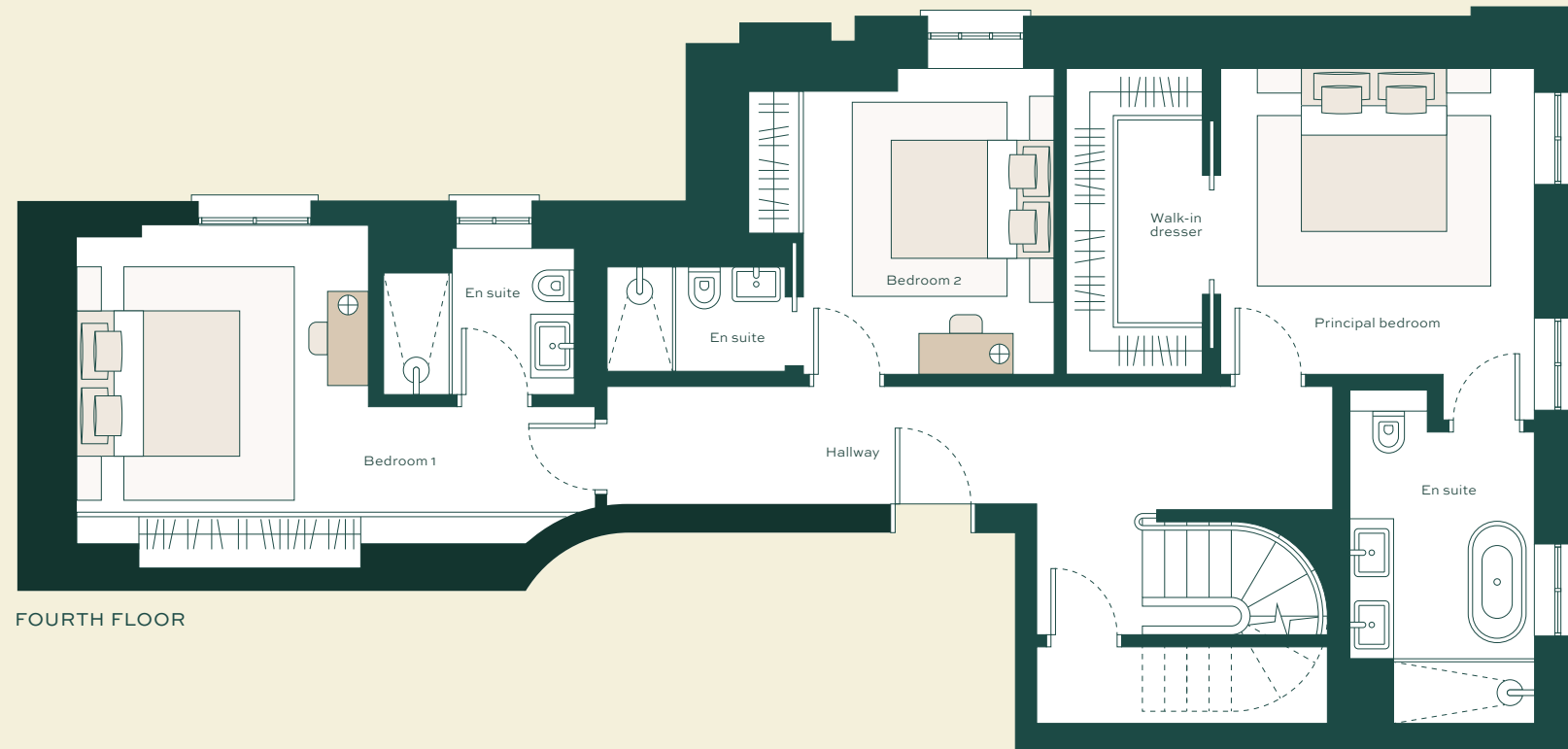




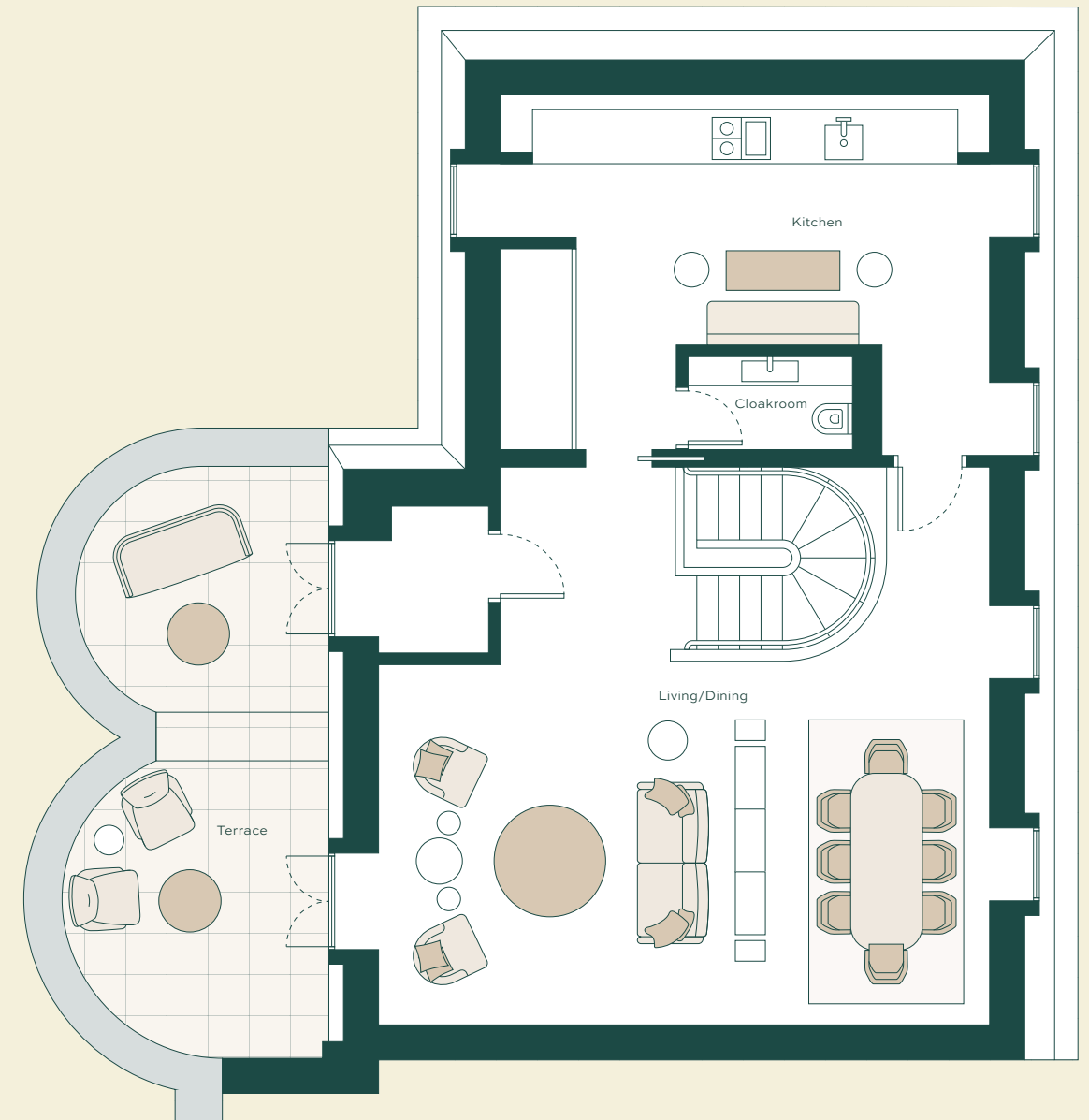
APARTMENT 10
3 BEDROOMS
FOURTH & FIFTH FLOOR



Hay's Mans



FOURTH FLOOR



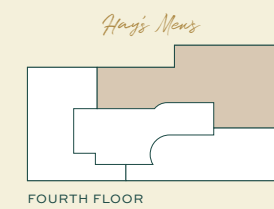
FIFTH FLOOR

Charles Street

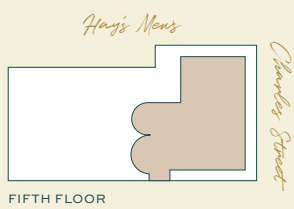
APPROXIMATE GROSS INTERNAL FLOOR AREA 2,027 SQ FT/188.3 SQ M
TERRACE AREA 246 SQ FT/22.9 SQ M



Hay's Mans



Hay's Mans
FOURTH FLOOR

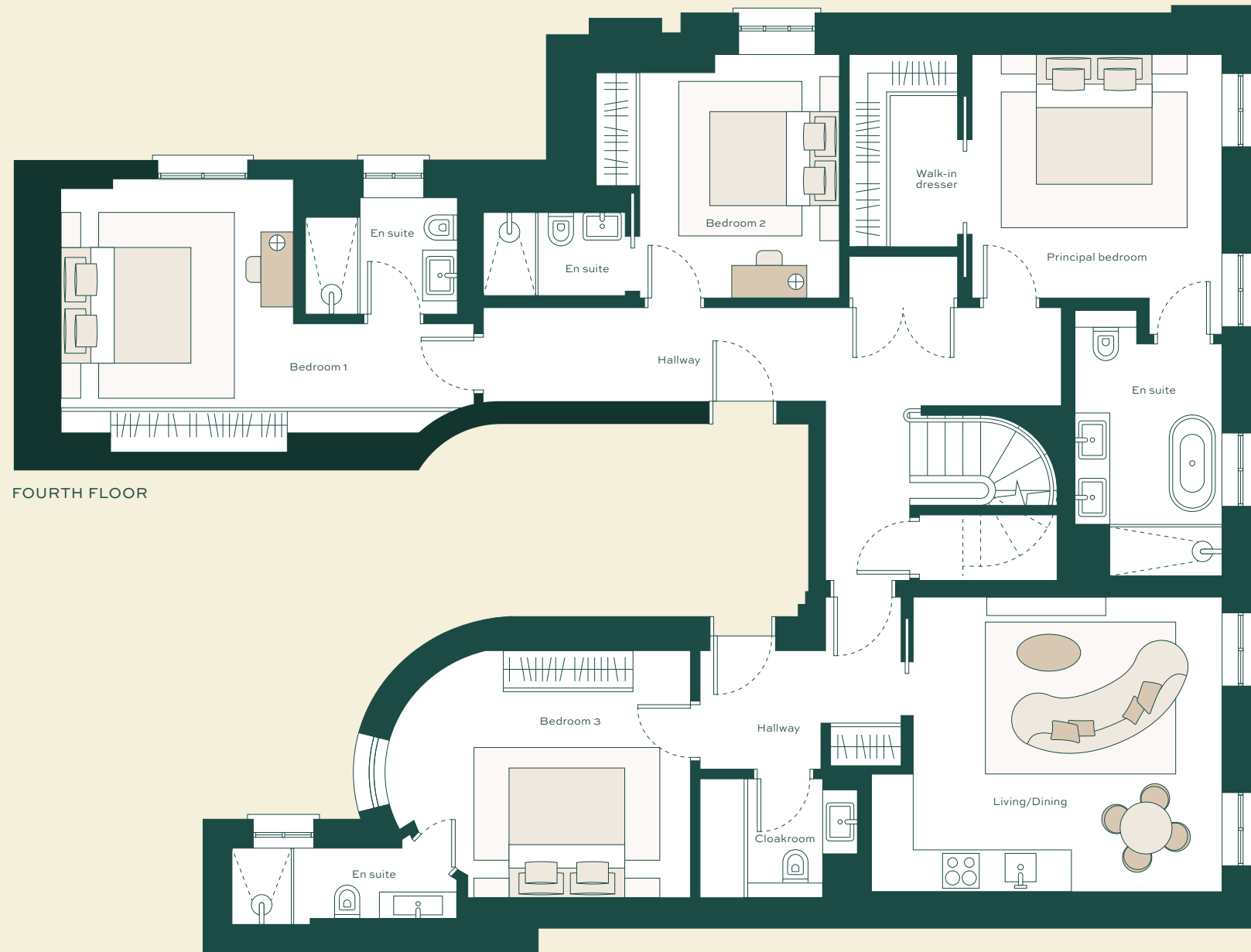


Hay's Mans
FIFTH FLOOR



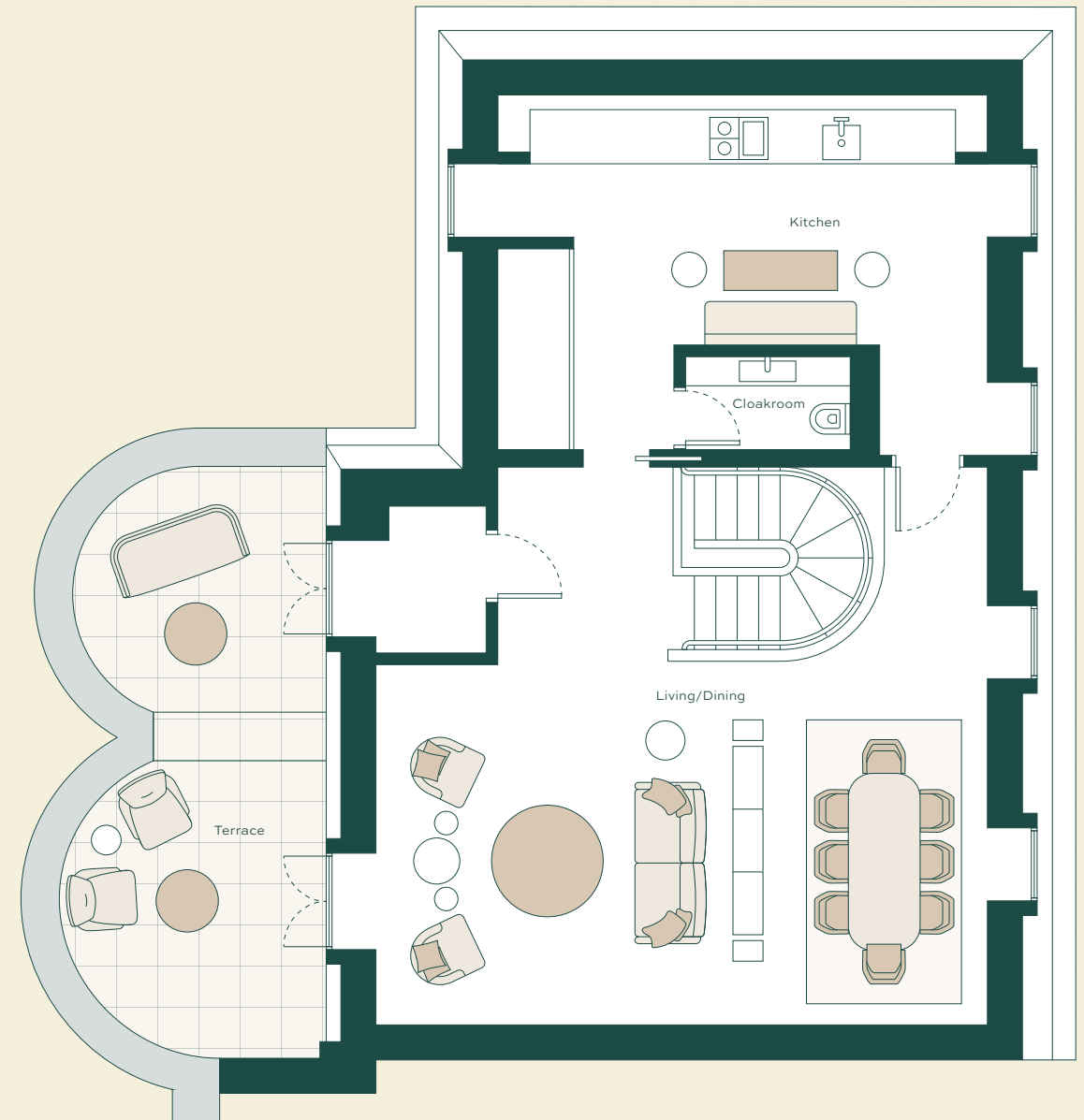
APARTMENT 9 & 10 COMBINED
4 BEDROOMS
FOURTH & FIFTH FLOOR

Hay's Mews



FOURTH FLOOR

APPROXIMATE GROSS INTERNAL FLOOR AREA 2,659 SQ FT/247 SQ M
TERRACE AREA 246 SQ FT/22.9 SQ M

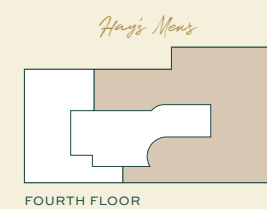


FIFTH FLOOR

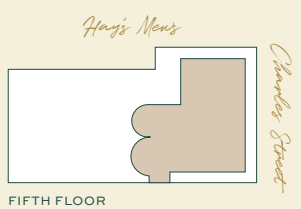
Charles Street



Hay's Mews



Hay's Mews
FOURTH FLOOR



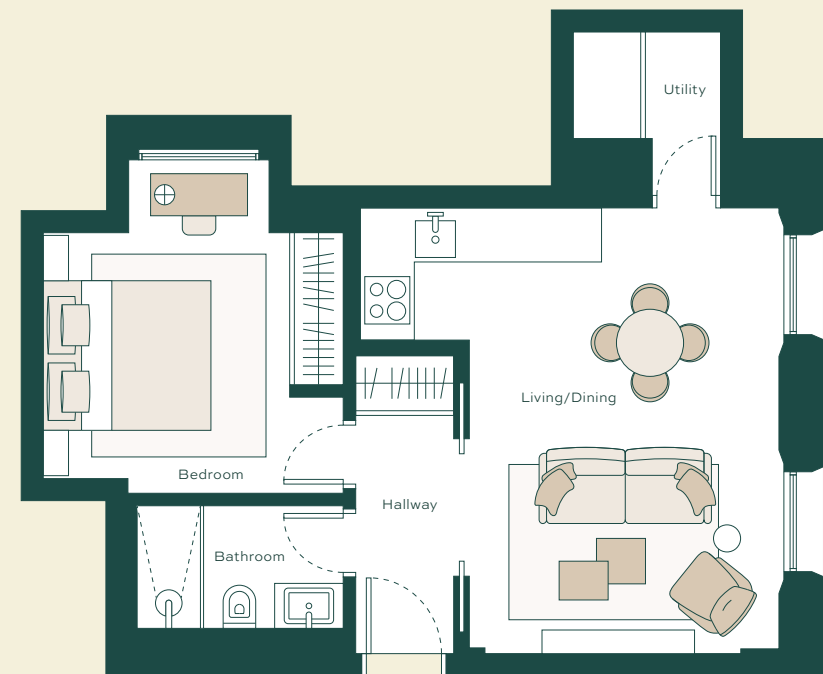
Hay's Mews
FIFTH FLOOR



APARTMENT 11
1 BEDROOM
LOWER GROUND FLOOR

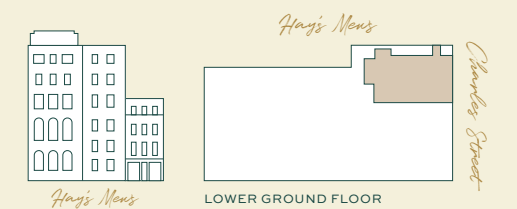


Hay's Mews



Charles Street

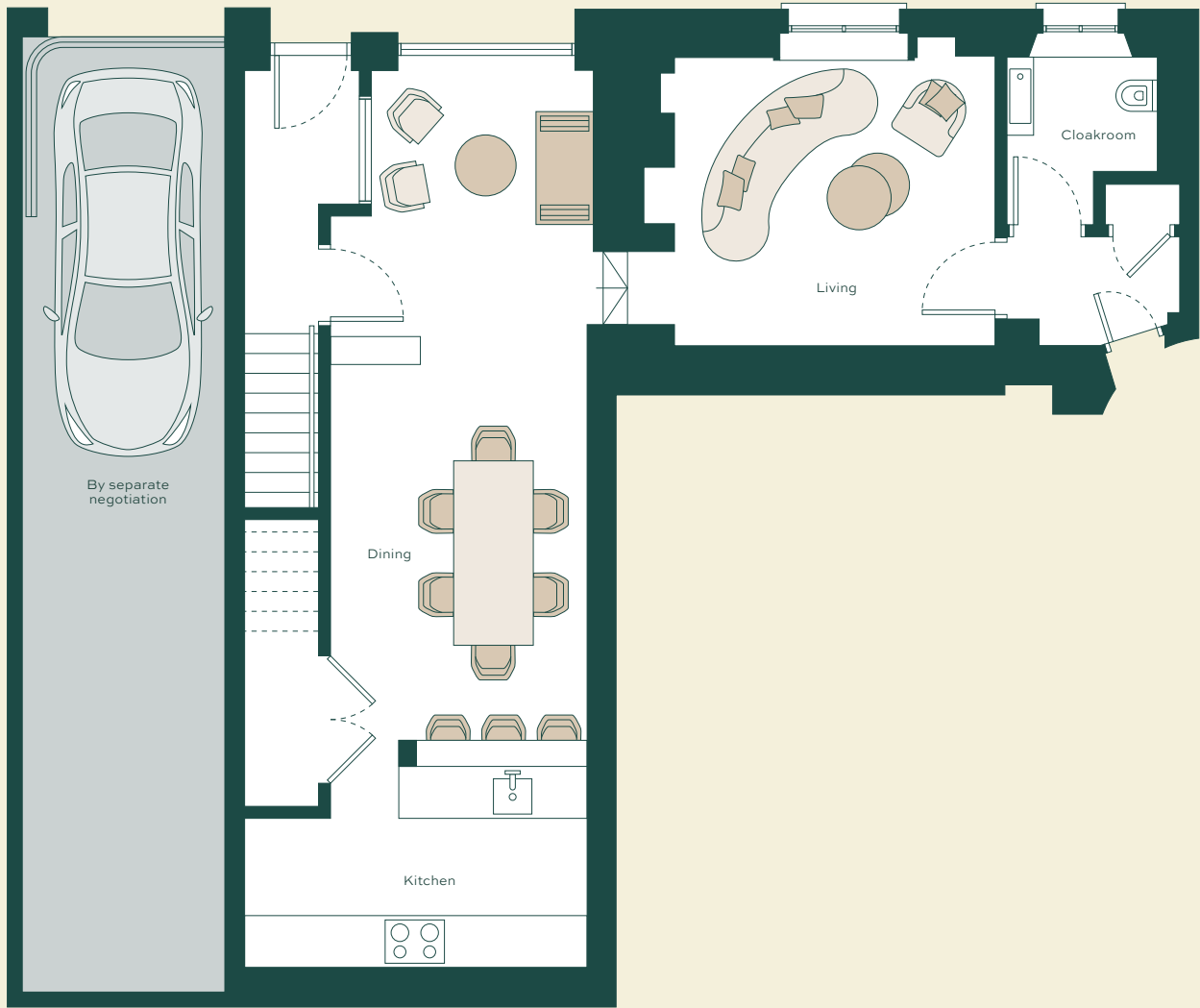
APPROXIMATE GROSS INTERNAL FLOOR AREA 521 SQ FT/48.4 SQ M





THE TOWNHOUSE
3 BEDROOMS
GROUND & FIRST FLOOR

Hay's Mews



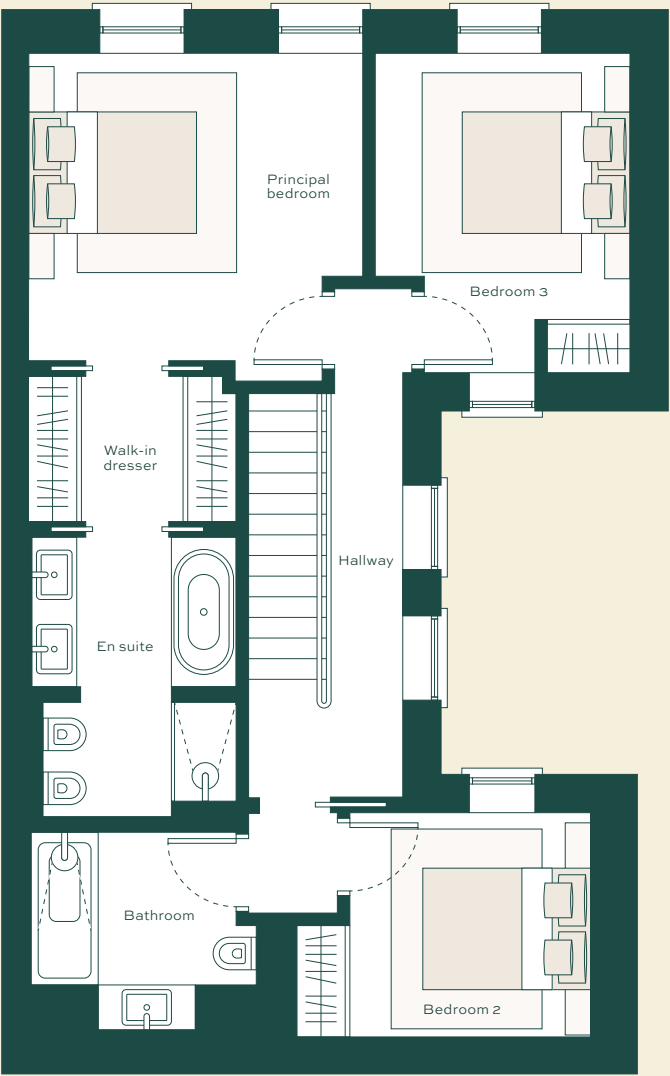
GROUND FLOOR

APPROXIMATE GROSS INTERNAL FLOOR AREA 1,553 SQ FT/144 SQ M

FLOOR PLANS



Charles Street



FIRST FLOOR





APARTMENT *specification*

DEVELOPMENT OVERVIEW

- Newly developed by REDD
- Interior design in collaboration with 1508
- Selection of 1, 2 and 3 bedroom interior-designed residences including: Lateral Apartments, a Townhouse and a Penthouse
- The building benefits from a lift to all levels and a 24/7 concierge
- Properties are being sold with a 999 year lease

KITCHENS & BATHROOMS

- Bespoke kitchens with stone worktops
- Gaggenau and Miele kitchen appliances
- Natural marble and porcelain tiles to walls and floors
- Tapware by Dornbracht
- Bespoke vanities to bathrooms and powder rooms

FIXTURES, FITTINGS & FINISHES

- Traditional plaster mouldings and cornice details
- Havwoods European oak flooring in Herringbone and plank formats.
- High-quality bespoke joinery to bedrooms

COOLING, HEATING AND PLUMBING

- Comfort cooling to principal spaces in various apartments
- Trench heaters and radiators
- Underfloor heating to bathrooms and powder rooms
- Heated towel rails in bathrooms
- High pressure hot water system
- Fire suppression system throughout



LIGHTING

- Lighting design by Light Directions
- Crestron lighting control system
- Whole house on/off functionality
- Internal wardrobe and vanity lighting

SECURITY

- 24/7 concierge
- Video entry system
- Banham security locks
- Hard wired smoke and fire detection system



Images shown are indicative only



R REDD

A privately owned real estate company, with offices in London and Monaco. It is focused on the investment, development and management of prime property in world-class locations. This ranges from initial site finding, managing the development process, exit strategies, as well as ongoing portfolio and property management.



ONE PALACE GREEN

DEVELOPMENTS



7 CHARLES STREET



51 MOUNT STREET



41 UPPER GROSVENOR STREET



Computer generated image is indicative only

Living and dining room



SIX
CHARLES ST
MAYFAIR

DESIGNED BY



A DEVELOPMENT BY



22-23 Old Burlington Street
Mayfair, London W1S 2JJ
+44 20 8016 4350
london@redd-realestate.com

6CHARLESSTREET.COM

R
REDD